



School College Partnership

Course Guide

2022



Contents

Page 04: Study options while still at school



Page 05: Foundation Apprenticeships in Fife

Page 05: Why School College Partnership?

Page 06: Landscape of Fife and Scotland growth sectors

Page 07: Reducing the gender gap

Page 08: Developing the young workforce



Page 08: Additional activities

Page 10: Curriculum offer



Study options while still at school

Choosing a School College Partnership programme while in S4, S5 or S6 as part of the school timetable supports school pupils to study qualifications at SCQF Levels 4 to 7 that complement the Curriculum for Excellence, whilst also studying their school subjects.

Working with our partners we aim to ensure young people on our programmes have access to educational experiences that are work-relevant and provide opportunity to build a skills base that supports continuous skills development, enabling them to make informed and ambitious choices about the career route that's right for them.

Fife College are delighted to be working in close partnership with both the school Head Teacher, and Senior Management Team and Fife Education Services to provide a broad suite of qualifications that enhances the school subject options available and offers streamlined pathways on to positive destinations in identified sector growth areas.

The provision is mainly focused at the Senior Phase, but can also be adapted to engage with school pupils as part of their Broad General Education.



Our offer is:

The curriculum offer is further enhanced with the inclusion of Open University study options delivered in partnership with the College. Fife College programmes are delivered in school, college or a combination of both ensuring that the pupil has access to the best available resources to learn and achieve in their chosen

vocational programme. The college programmes provide the pupil with the necessary skills and knowledge to progress to the next SCQF level either in a subsequent year at school or to facilitate progression to full-time education at college, university or on to an apprenticeship programme.

The partnership offers pupils increased learning opportunities to meet their chosen career pathway. The curriculum offer is further enhanced with many options aligned to local, regional and national demand based on Labour Market Intelligence (LMI) and Skills Development Scotland Regional Skills Assessments.

Foundation Apprenticeships in Fife

This innovative career pathway allows S4 and S5 pupils to learn the skills that employers want and need, and pick-up real-life work experience.

They will also get an industry-recognised qualification at SCQF Level 4, Level 5 or Level 6 which is the same level of learning as a Higher - all of which adds to their CV for future college and job applications.

Pupils can choose from a range of 1 year or 2 year practical courses, which can provide a pathway to careers in a range of booming sectors, from software development and care to engineering and creative industries.

There are 11 Foundation Apprenticeships available in partnership with Fife Council and Skills Development Scotland (SDS) and we can help pupils on to the next stage with a number of progression routes after they complete their apprenticeship.

Why School College Partnership?

School College Partnership courses have an integrated inclusive curriculum designed to increase the young person's understanding of related industry sectors through engaging in workplace knowledge and practices at various SCQF levels.



Landscape of Fife and Scotland growth sectors

During the pandemic we saw a drop in the national Gross Value Added (GVA) output, although this is predicted to be back to pre-pandemic growth of 6% by 2022. This is forecast to grow 1.8% per year between 2021 and 2031. This figure is 0.2% lower than the predicted growth rate for the UK.

Accommodation and Food services is predicted to have the highest growth in Fife between 2021-2031 at 3.9%, with Administrative and Support Services sitting at 2.9% and Professional, Scientific and Technical sectors sitting at 2.6% growth. It is also predicted that during this period, Fife will continue to see a significant growth amongst the Construction and Human Health and Social Services sectors, with the Retail trade still being one of the five main employment sectors, making up 8.9% of the jobs in Fife.

Arts, Entertainment and recreation is also an area that is predicted to grow from 2021-24, with an expected growth of 600 new jobs in Fife.

There is also a predication of changes to the types of roles that workers will undertake within sectors with the implementation of digital and technology being introduced in the workplace. This will see an increase in the requirements for skills in IT and technological skills to support these roles across a broad range of sectors and not just in the digital sector.

Our 2022 offer encompasses Science, Technology, Digital Skills, Engineering and Mathematics (STEM) education as this is a key priority for Curriculum for Excellence to bridge the STEM skills gap within the labour market for Scotland and support the digital revolution to futureproof the workforce of tomorrow.

With Human Health and Social Services already one of Fife's largest sectors, the prediction that it shall continue to grow in all regions sets Fife up to exceed the expected growth margin.

In contrast, Edinburgh and South East Scotland are predicted to surpass the Scottish and UK economic growth rates in all sectors. It is forecast that Science and Technology services will be the biggest growing markets in these regions, although in all our sectors there is a focus on digital skills.

In order to give our young people the brightest possible future, Fife College, in partnership with other education providers and the region's schools, is committed to providing opportunities in emerging and growing industries. As



such, the School College Partnership (SCP) is proud to offer courses to young people, which set them in good stead to compete in this new economy.

These opportunities are unique to the partnership and allow young people an insight into the sector whilst attaining a recognised qualification, and there are many paths that follow on from our partnership qualifications.

Although historically, many Fife graduates have entered the Edinburgh employment market, it is important that we look further afield and offer our young people the opportunity to access learning that can support them to gain new skills and allow them to compete in their predicted areas for growth.

We have seen a downtrend in the uptake of some STEAM related traditional areas of study, especially in areas where conventionally there would have been an opportunity to study an apprenticeship that then led to employment. There is a need to engage the young person at an earlier age to raise awareness, navigate towards an educational focus, and provide educational opportunities for students to pursue their preferred career pathways.

School College Partnership courses have an integrated curriculum designed to increase the young person's understanding of the related industry sectors through engaging in workplace knowledge and practices.



The course content will be aligned to sustainable industry led pathways, raising awareness of the industries and the skills and knowledge necessary to appropriately equip students for the school to work transition across industry sectors. All of our courses offer a progression on to further SCP courses and/or a full-time college course within these studied areas.



Reducing the gender gap



One of the contributing factors to lower female participation in STEM subjects at schools is related to confidence and self-belief. Reports suggest that girls appear less confident in their abilities when studying physics, with confidence levels decreasing as they get older.

The impact of this negative self-view feeds through to subject and career choices and career progression for women. The best way to change

and challenge this may not be by conventional methods and may require cultural change. Staff in college, both male and female, who are working in these non-traditional roles help to address these very challenges. This goes a long way towards strengthening industry engagement with education and increasing employment opportunities for our young people in Scotland – one of the Government's key focuses.

Developing the young workforce

The aim of Developing the Young Workforce (DYW) is to deliver a permanent, fundamental change of culture through developing sustainable industry-led pathways for young people into employment.

Fife College work with our employer partners and Skills Development Scotland to offer activity that will enhance high school curriculum and add value to existing activities while engaging young people in a broader learning experience that is sector

focused, to give them industry focused skills and experience, and a better understanding of the workplace and the transferable skills required for the future. Activity is very much designed to meet the individual needs identified by high schools with support from our SCP team.

We will work together to support the school to address the identified targets through providing industry recognised curriculum, workshops and activity.



Additional Activities

Activity type and model of delivery is very much tailored to meet the needs of schools as each school identifies different requirements.

Short Courses for School Leavers

Our short courses are delivered in partnership with employers and SDS to offer school leavers an opportunity to gain experience and a vocational qualification at SCQF Level 4 in a

Foundation Apprenticeship in Hospitality which is one of the areas that has been identified as a growth sector*.

*more sector areas to follow for 2022- 23.

Sector skills workshops

Sector Skills workshops promote creative thinkers through interactive, specially designed relevant, effective activities, in support of pupil learning, motivation and aspiration. These

are offered as part of the school engagement programme to bring a strong employability skills focus to the schools' experience, enhancing the curriculum delivery, and exposing young people to the science and technology that is shaping the future.

The programme will support pupils by giving an insight into career possibilities from participation in local economy to national and international career pathways.

STEM/STEAM activity workshops

STEAM activity workshops ensure that pupils are given an early opportunity to identify career pathways and to enjoy college support, facilities, and expertise to create, manage, and fulfil their desired learning and career pathway. Examples of this include crystal growing, maths labs, robotics, coding, big ideas, and much more.

We're here to help

The Department of Student Engagement and Experience within Fife College includes Guidance, Attendance, Inclusion, Employability, Funding, Admissions, Student Association and Customer Services.

We have a large number of experienced staff available on all campuses who can provide high quality learner-focused services and support. We work in partnership with staff and external partners to achieve the Fife College vision of "transforming lives". We are here to help you with your journey from school to college and beyond and we look forward to welcoming you to Fife College.

After school clubs

These are offered in targeted areas identified in conjunction with the school to increase interest in areas of gender gap, skills gap, and sector growth areas.

Career fairs

Fife College supports schools at these events through engagement with our curriculum teams who bring an industry focus and up-to-date knowledge of the sectors they work in, giving young people a broader learning experience that is sector focused to give them a knowledge of industry and a better understanding of the workplace and the transferable skills required for the future.

Staff Pathway Events

These events offer an opportunity for staff within school and college curriculum teams to sit and discuss pathway opportunities for young people, qualifications, and how the School College Partnership should be taken forward.

Pupil/parent/Carer pathway events

We offer events that are an opportunity to raise awareness and give a better understanding of the types of qualifications offered for our young people today, and the many pathways available to them to get to where they want to be.

Joint Staff CPD

CPD is offered in targeted areas identified in conjunction with the school to share best practice and strengthen the partnership.

Widening Access Programmes – First Chances Fife

These engagement workshops and activities aim to raise the aspirations and attainment of pupils who without this intervention would not consider HE as an option for a progression pathway. We deliver this programme in partnership with The University of St Andrews and funded by The Robertson Trust.

Pupils can find out if they are eligible for a place on this supportive programme by contacting their Guidance Teacher.



Curriculum Offer

West Fife Course Offering

Course	SCQF Level
Advanced Certificate: Health Care Professions, Care Skills and Knowledge (1 year) (Subject to approval)	6
Certificate: People and Society (Subject to approval)	4
Certificate: Step Up for Hospitality, Tourism and Events	4
Foundation Apprenticeship: Accounting (1 year)	6
Foundation Apprenticeship: Accounting (2 years)	6
Foundation Apprenticeship: Business Skills (1 year)	6
Foundation Apprenticeship: Civil Engineering (2 years)	6
Foundation Apprenticeship: Creative and Digital Media (2 years)	6
Foundation Apprenticeship: Engineering (2 years)	6
Foundation Apprenticeship: Food and Drink Technologies (1 year)	6
Foundation Apprenticeship: IT Software Development (2 years)	6
Foundation Apprenticeship: Scientific Technologies (1 year)	6
Foundation Apprenticeship: Social Services and Healthcare	6
Foundation Apprenticeship: Social Services Children and Young People	6
Foundation Apprenticeship: Work Based Skills: Automotive	4
Foundation Apprenticeship: Work Based Skills: Construction	4
Foundation Apprenticeship: Work Based Skills: FA Hospitality	4
Foundation Apprenticeship: Work Based Skills: Hospitality	5
Foundation Apprenticeship: Work Based Skills: Hospitality (Short Course Jan- June)	4
Foundation Apprenticeship: Work Based Skills: Hospitality (Short Course June-Dec)	4
Higher: Psychology	6
HNC: Accounting (1 year)	7

HNC: Accounting (2 years)	7
HNC: Applied Science (1 year)	7
HNC: Applied Science (2 years)	7
HNC: Business (1 year)	7
HNC: Business (2 years)	7
HNC: Police Studies (1 year)	7
HNC: Social Science (2 years)	7
Intermediate Certificate: Shell Girls into (Renewable) Energy	5
Introduction to the Hair and Beauty Sector VTCT Entry level	4
National 4: Early Learning and Childcare	4
National 5: Early Learning and Childcare	5
NPA: Criminology	5
NPA: Cybersecurity	6
NPA: Digital Media Animation	5
NPA: Social Services, Children and Young People	6
Skills for Work: Engineering	5



Lynne Ralph
Head of DYW Partnerships



Tracy English
Lead Mentor DYW and Project Lead



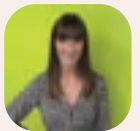
Brenda Heenan
SCP Co-ordinator



Denise Yates
Foundation Apprenticeship Co-ordinator



Kirsty Penman
DYW Assistant (Foundation Apprenticeships/First Chances Fife)



Tracey Birkin
DYW Assistant (School College Partnership)



Diane Lawson
DYW Assistant (Foundation Apprenticeships)



Joe Hunt
DYW Modern Apprentice



Helen Pearson
Departmental Administrator



For more information

Call: 0344 248 0115

Email: scp@fife.ac.uk

Visit: fife.ac.uk/schools



The information published in this guide was correct at the time of print.
For the most up-to-date information, you should always check our website.

Published December 2021

Fife College is a registered Scottish charity (No. SC021203)